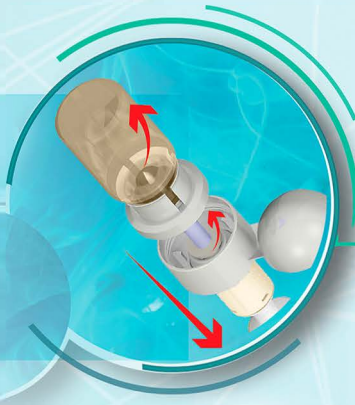


## PRESSURE EQUALIZATION

When connected to a drug vial, the ProSeal Vial Adaptor equalizes the pressure difference between the vial and itself. Without a pressure equalization system, differences in pressure can lead to the generation of fine aerosols that may escape into the air and expose the environment, patients, and health care professionals to hazardous drugs. Other CSTDs use an integrated filter to cleanse escaping air contaminated with hazardous drug vapors or aerosols. In the ProSeal Vial Adaptor the expandable chamber seals the escaping filtered air within the device itself.



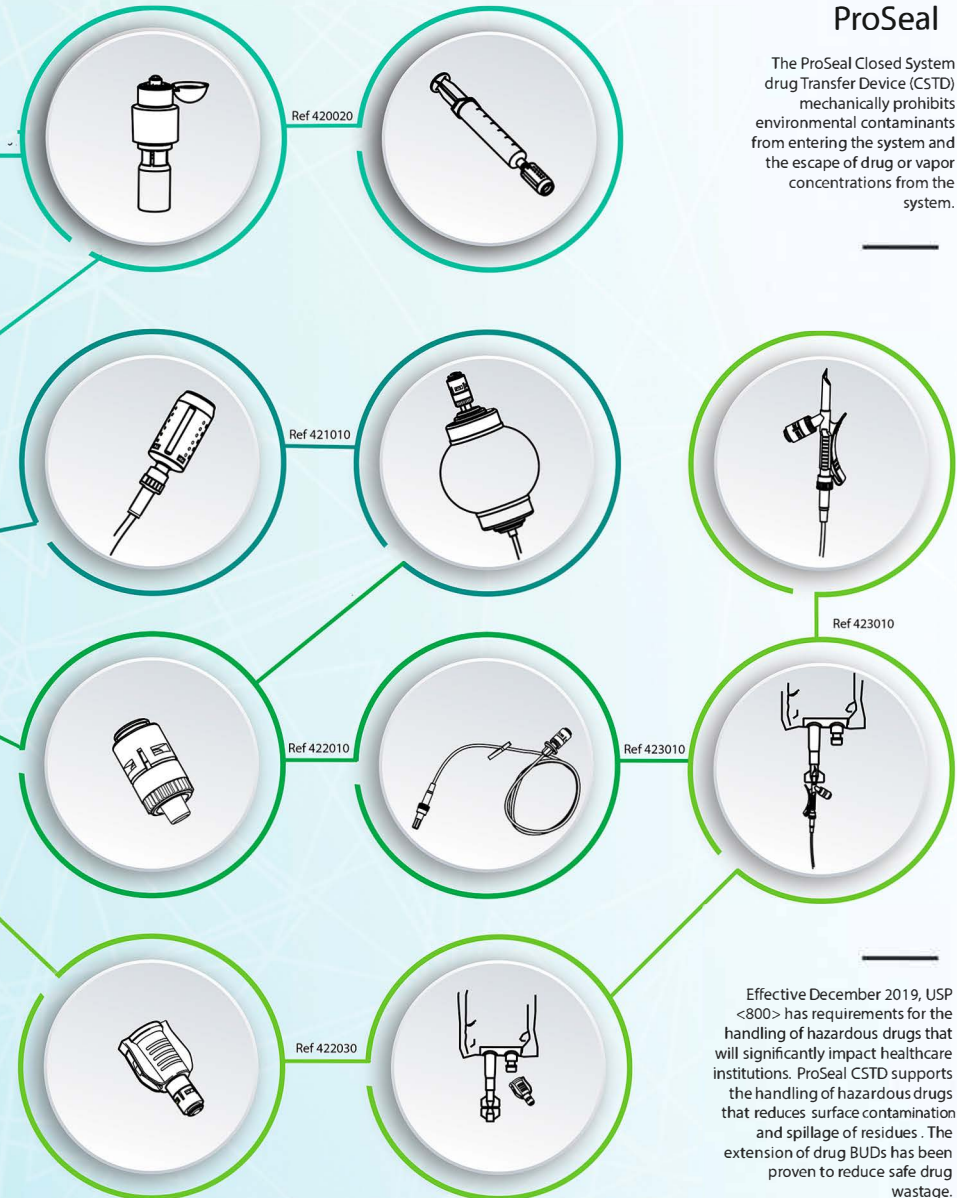
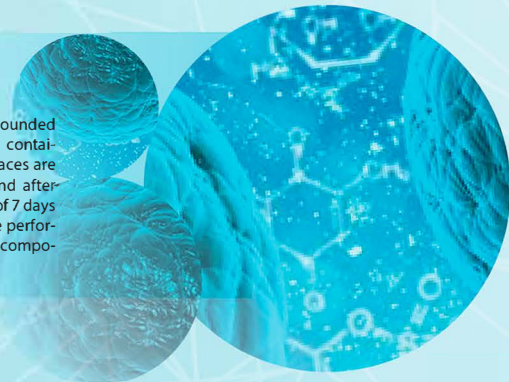
## DRY CONNECTION

Dry connectors are an important feature of CSTDs and the corresponding injection sites as it confirms the lack of leakage of droplets, aerosols or vapors. A surrogate marker like fluorescein is used to confirm the absence of fluid residues on the injected surfaces. The ProSeal Injection Site and all its corresponding interface membranes exhibits 100% efficiency in achieving a dry connection in the communicating surfaces in a fluid transfer.



## MICROBIAL INGRESS

The efficiency of CSTD in preserving the microbiological integrity of compounded products is demonstrated through a microbial challenge test. This is such that containers of growth media is fitted with ProSeal Injection Sites. The membrane surfaces are artificially contaminated with suitable inoculum of suitable microorganism and after swabbing with disinfectant, several samples are taken. At the end of test period of 7 days the container is incubated to check for microbial growth. All manipulations are performed under ISO 5 conditions to simulate the real-life situation. ProSeal CSTD components are confirmed to prevent microbial ingress of at least 168 hours (7 days)

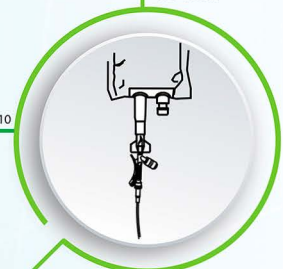


## ProSeal

The ProSeal Closed System Drug Transfer Device (CSTD) mechanically prohibits environmental contaminants from entering the system and the escape of drug or vapor concentrations from the system.



Ref 423010



Effective December 2019, USP <800> has requirements for the handling of hazardous drugs that will significantly impact healthcare institutions. ProSeal CSTD supports the handling of hazardous drugs that reduces surface contamination and spillage of residues. The extension of drug BUDs has been proven to reduce safe drug wastage.

# ProSeal™

Closed System Transfer Device

Réf421010 Injecteur ProSeal  
Réf422010 Site d'injection ProSeal  
Réf420020 Adaptateur de flacon ProSeal 20 mm, pression 20 ml  
Réf420010 Adaptateur de flacon ProSeal 13 mm, pression 20 ml  
Réf420030 Adaptateur de flacon ProSeal 20 mm, pression 50 ml  
Réf420040 Adaptateur de flacon ProSeal 28 mm, pression 60 ml

Réf423010 Percuteur pour poche avec site d'injection ProSeal  
Réf423040 Extension de tubulure 30 cm Y/NFC et site d'injection ProSeal  
Réf423030 Extension de tubulure 30 cm et site d'injection ProSeal  
Réf423011 Spike de transfert 20 mm ProSeal & injecteur ProSeal  
Réf423020 Spike de transfert 20 mm ProSeal & site d'injection ProSeal  
Réf422030 Adaptateur pour poche

Réf424010 Dispositif d'assemblage d'adaptateur de flacon



Vial to Patient

Exposure safe



MT Promed Consulting GmbH  
Altenhofstr. 80  
66386 St. Ingbert Germany  
+49-6894-581020



Epic International Thailand Co., Ltd  
WHA Eastern Seaboard Industrial Estate  
500/73 M.2 Tasit Amphur Pluakdaeng Rayong  
Thailand 21140

CE 0123